



## 3 BRUNSWICK TERRACE

WEYMOUTH, DT4 7RW

£500,000  
FREEHOLD

\*\* Georgian seaside townhouse directly opposite the beach \*\* Freehold \* Income opportunity \* Set over four floors \* Just moments from the town centre and Weymouth harbour \* 10 mins walk to train station \* Panoramic sea views \* No chain \*\*



HIVE

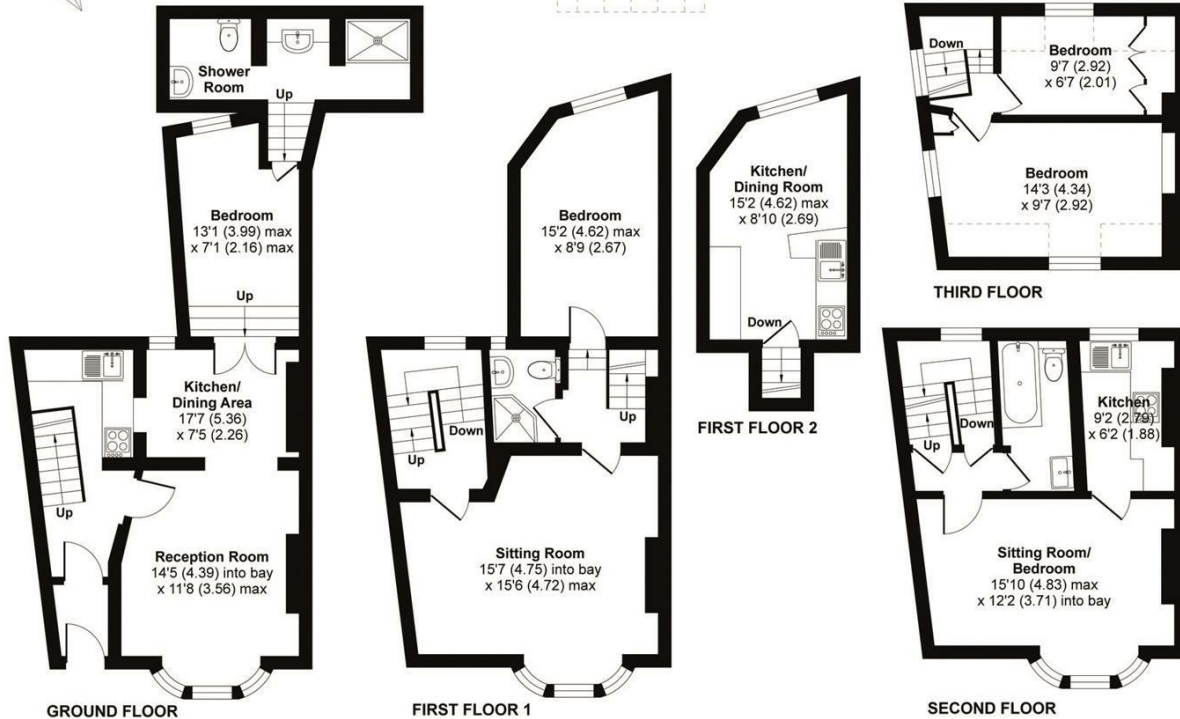
## Brunswick Terrace, Weymouth

Approximate Area = 1652 sq ft / 153 sq m  
Including Limited Use Area(s) = 43 sq ft / 4 sq m  
Total = 1695 sq ft / 157 sq m

For identification only - Not to scale



Denotes restricted  
head height



NOTE: Measurements were not taken by HIVE and we cannot guarantee their accuracy.



Agents Note: Whilst every care has been taken to prepare these particulars, they are for guidance purposes only. All measurements are approximate and are for general guidance purposes only and whilst every care has been taken to ensure their accuracy, they should not be relied upon and potential buyers/tenants are advised to recheck the measurements

Hive & Partners  
Unit F1  
Arena Business Centre 9  
Nimrod Way  
Ferndown  
BH21 7UH

01202 122 002  
sales@hiveandpartners.co.uk  
<https://www.hiveandpartners.co.uk/>



HIVE